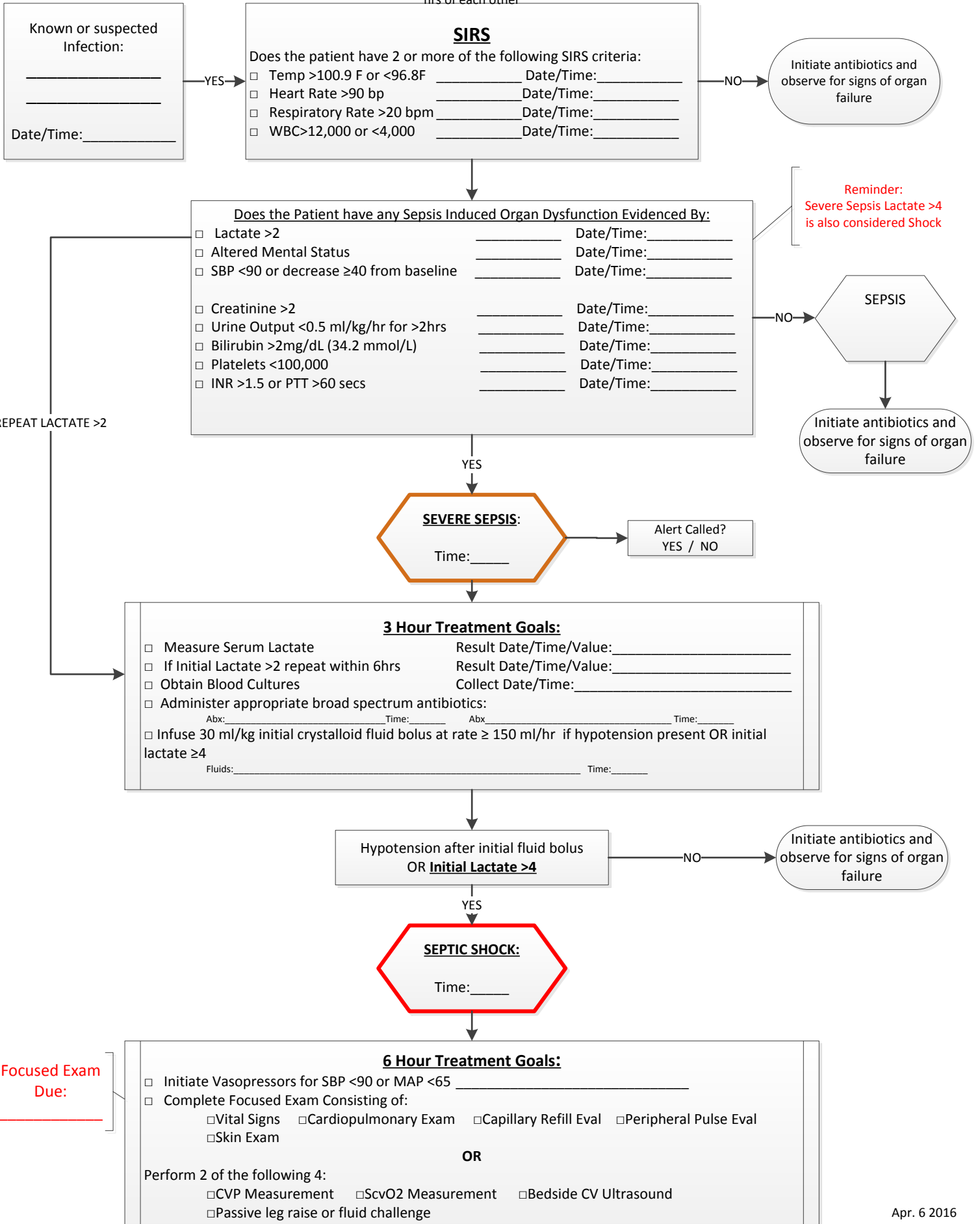


Severe Sepsis and Septic Shock Treatment Algorithm

Reminder: Values may change. Infection/SIRS/Organ Dysfunction must be present within 6 hrs of each other



ANTIBIOTIC RECOMMENDATIONS

ANTIBIOTIC MONOTHERAPY

Always administer monotherapy choice first-then begin any secondary antibiotics!!

- Zosyn (piperacillin/tazobactam)
- Merrem (meropenem)
- Rocephin (ceftriaxone)
- Levaquin (levofloxacin)
- Unasyn (ampicillin/sulbactam)
- Primaxin (imipenem/cilastatin)
- Maxipime (cefepime)

OR

ANTIBIOTIC COMBINATION THERAPY

If using combination selections BOTH must be started within 3 hrs

Must select one from column A and one from Column B

A

- Gentamicin (Aminoglycoside)
- Tobramycin (Aminoglycoside)
- Amikacin (Aminoglycoside)
- Azactam (Aztreoman)
- Cipro

B

- Cleocin (Clindamycin)
- Cubicin (Daptomycin)
- Vancomycin (Glycopeptide)
- Zyvox (Linezolid)
- Zithromax (Azithromycin)
- Ampicillin
- Ancef (Cephalosporin)
- Mefoxin (Cephalosporin)